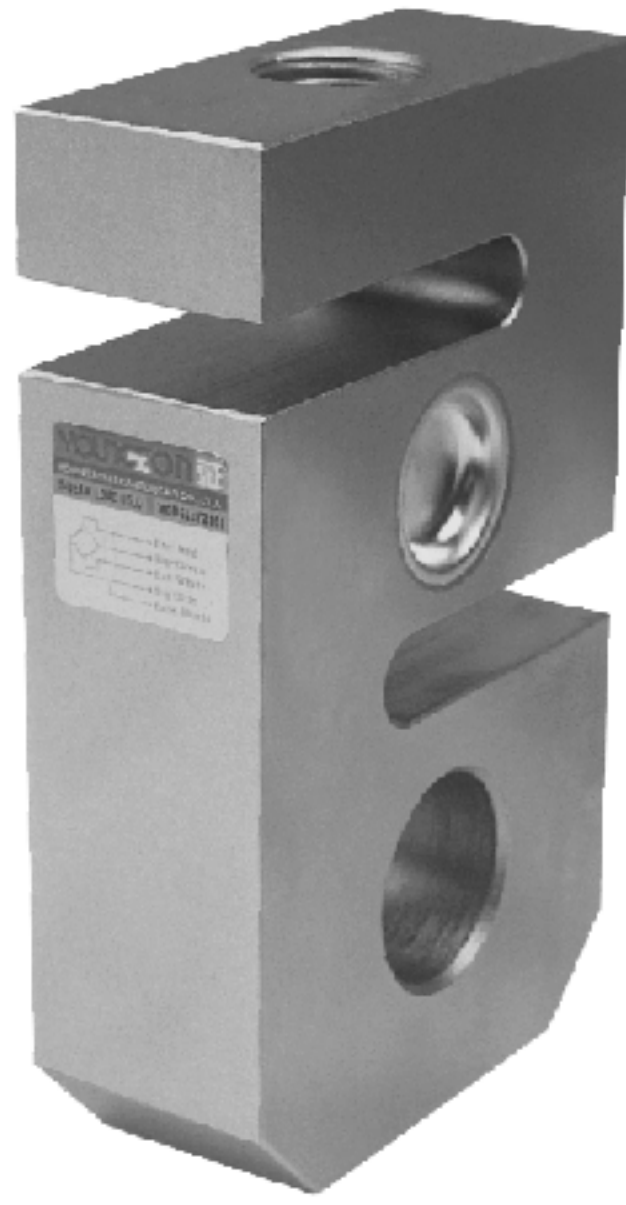


Rated Capacities 量程:
5,000kg...15,000kg

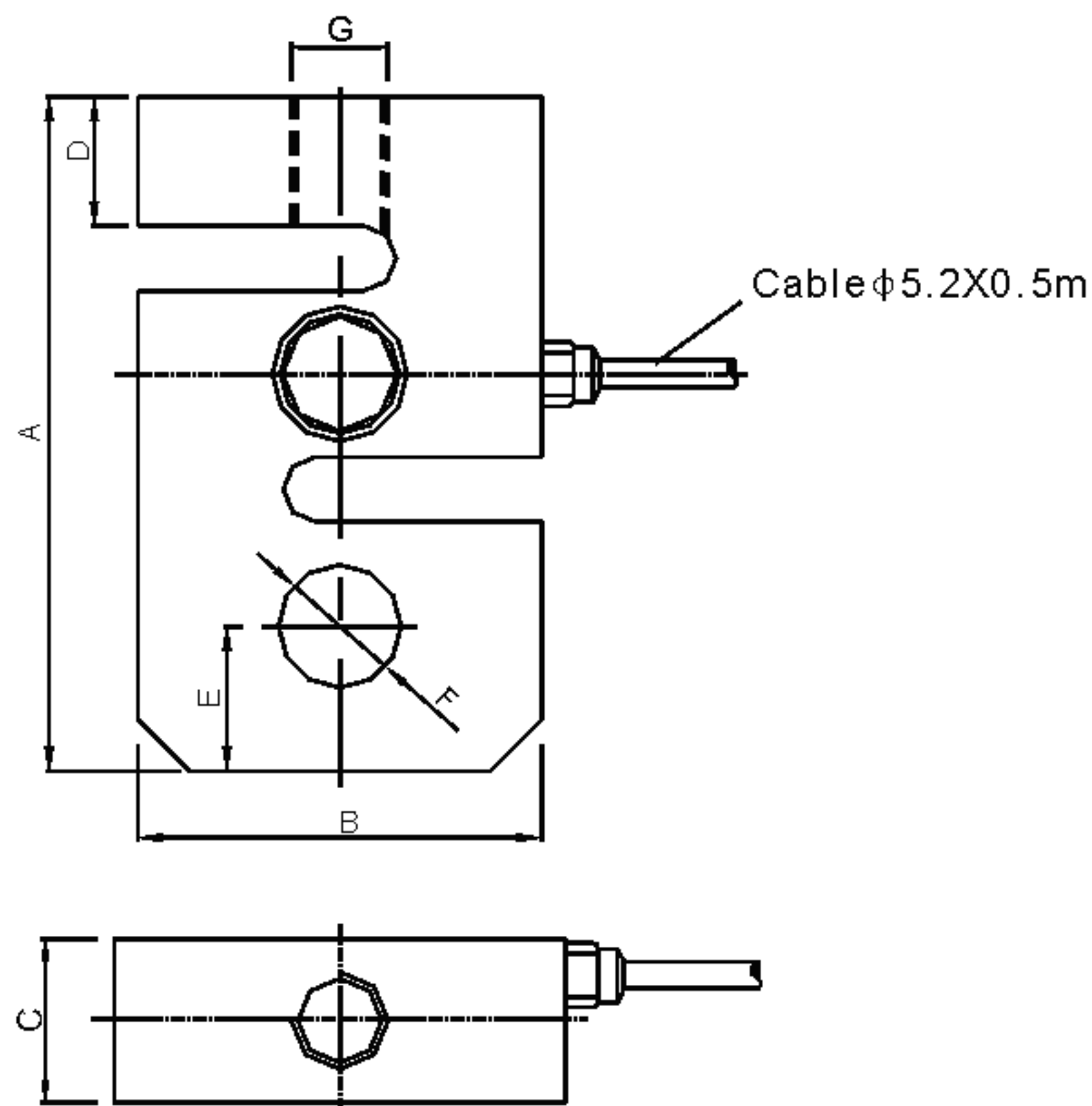


101DH

Special features 特點:

- High accuracy up to 5 000d for scales class III
高精度，符合 III 級秤要求
- Special design for crane scales
吊秤專用
- Explosion proof version (Ex ib II CT4)
防爆 (Ex ib II CT4)級
- Protection to IP66 防護等級 IP66

Dimensions 尺寸(in mm毫米; 1mm = 0.03937 inches)



Rated Capacity	A	B	C	D	E	F	G
kg/mm							
5,000	116	76.2	31.75	23	23	φ22	M18X1.5
7,500	146	88.0	38.00	31	35	φ30	M24X2.0
15,000	193	115	50.80	40	44	φ38	M30X2.0

Technical Data 技術參數

Type 型號		101DH		
Accuracy class according to OIML R60 準確度等級 (國際法定計量組織OIML R60 國際建議)		C3		
Maximal numbers of load cell verification intervals (n _{LC}) 最大檢定分度數		5 000		
Rated capacity 量程	kg	5,000	7,500	15,000
Weight (G), approx. 傳感器毛重	kg	1.9	3.1	7
Minimum load cell verification interval (V _{min}) 最小檢定分度值	% of C _n	0.02		
Sensitivity (C _n) 靈敏度	mV/V	3 ± 10%		
Zero balance 零位輸出	mV/V	± 0.06		
Temperature effect on sensitivity (TK _c) 溫度對靈敏度的影響 *	% of C _n /K	< ± 0.0012		
Temperature effect on zero balance (TK _o) 溫度對零位元輸出的影響	% of C _n /K	< ± 0.0040		
Non-linearity (d _{lin}) 非線性 *	%	< ± 0.017		
Repeatability (d _{rep}) 重復性 *	%	< ± 0.017		
Hysteresis error (d _{hy}) 滯後誤差 *	%	< ± 0.017		
Creep (d _{DR}) in 30 min. 蠕變	%	< ± 0.023		
Input resistance (R _{LC}) [Red(+)-black(-)] 輸入阻抗 [紅(+)-黑(-)]	Ω	400 ± 25		
Output resistance (R _o) [Green(+)-white(-)] 輸出阻抗 [綠(+)-白(-)]	Ω	350 ± 3		
Reference excitation voltage (U _{ref}) 推薦激勵電壓	V(DC/AC)	0.5...12		
Maximal excitation voltage 最大允許激勵電壓	V(DC/AC)	18		
Insulation resistance (R _{is}) 絕緣阻抗	GΩ	> 2 [50 VDC]		
Nominal temperature range 正常工作溫度範圍	°C [°F]	-10...+40 [15...+105]		
Service temperature range 允許工作溫度範圍	°C [°F]	-10...+50 [15...+125]		
Storage temperature range 存放溫度範圍	°C [°F]	-25...+70 [-15...+160]		
Safe load limit (E _L) 安全極限載荷	% of C _n	200		
Breaking load (E _d) 破壞極限載荷	% of C _n	400		
Protection class (IP) acc. to IEC529 防護等級(國際電工委員會IEC529標準)		IP66		
Material 彈性元件材料		Alloy Steel 合金鋼		
Optionally 可使用場合		Explosion proof version(Ex ib II CT4) 防爆(Ex ib II CT4)級		

* The data for deviation of linearity, repeatability, hysteresis error and temperature effect on sensitivity are typical values. The sum of these data meets the requirements according to OIML R60.

非線性，重復性，滯後誤差和溫度對靈敏度輸出的影響等參數為典型的參數，以上參數最終符合 OIML R60 誤差帶的要求。